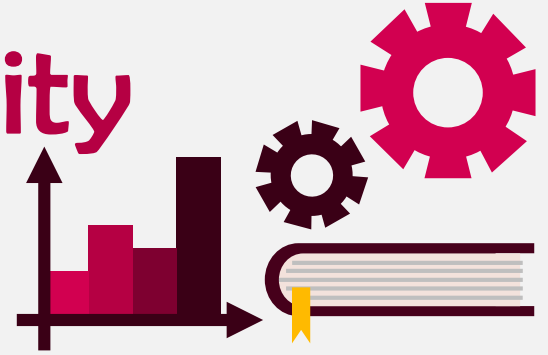




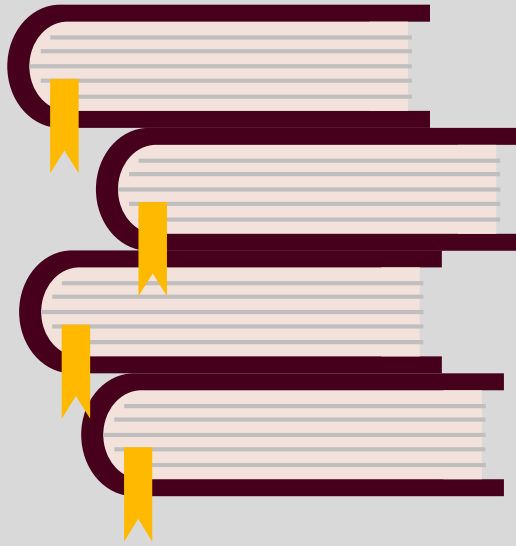
Santa Clara University

Class of 2014

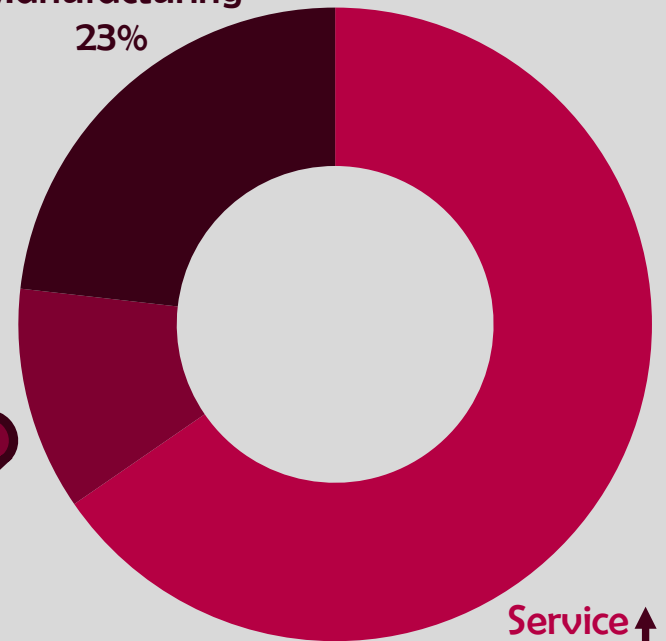


Workforce Statistics

Sectors of Employment¹



Manufacturing
23%



Non-Profit
11%



Service
66%

Note: Percentages may not add to 100 due to rounding

Graduates Rate



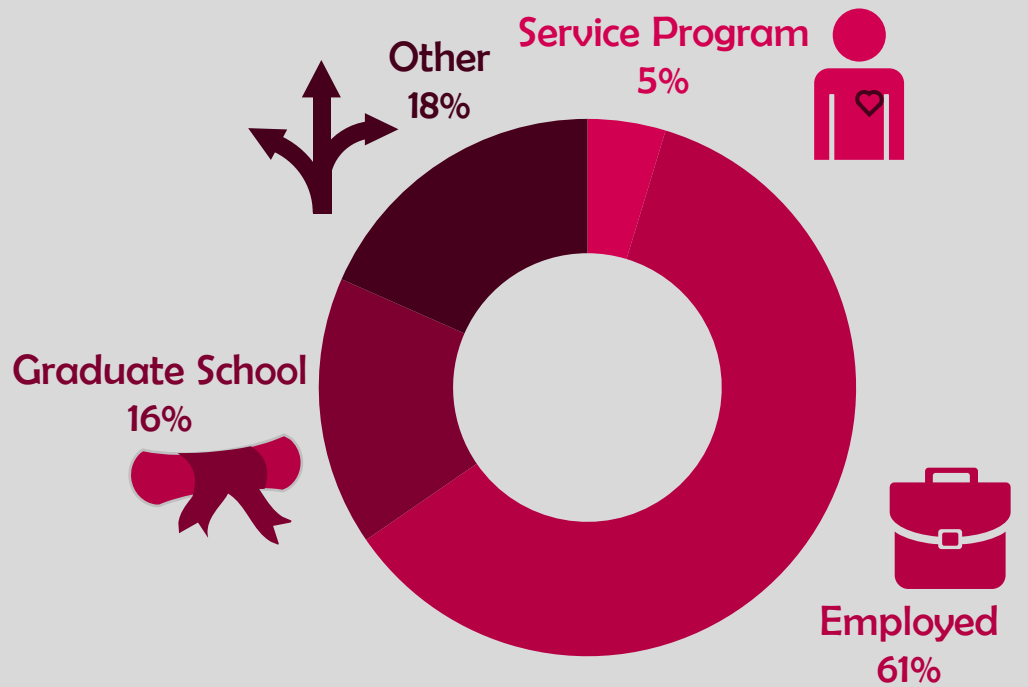
Good to Excellent preparation for...

Career¹ 84%

Life after College² 90%

Graduate Study³ 94%

Where Are They Now?



36% Granted one or more fellowships, teaching assistantships, and/or research assistantships³

97% Admitted to at least one graduate program⁴

¹ of those working, ² all graduates, ³ of those attending graduate school, ⁴ of those who applied for graduate study, ⁵ of graduates in the job market

The Santa Clara Survey of recent graduates connects employment, education, civic, and satisfaction outcomes to measure the impact of a Santa Clara education. Conducted annually at six-months post-graduation, the 41.9% response rate yields a profile that is representative of the graduating class. Initiated with the class of 2008, these longitudinal data track Santa Clara's progress to ensure an education of citizens and leaders of competence, conscience, and compassion.

Source: first-time, four-year graduates responding to the Survey of Recent Graduates in 2014. For additional information, see www.scu.edu/ir/data/student-outcomes or contact: institutionalresearch@scu.edu

Santa Clara University Class of 2014

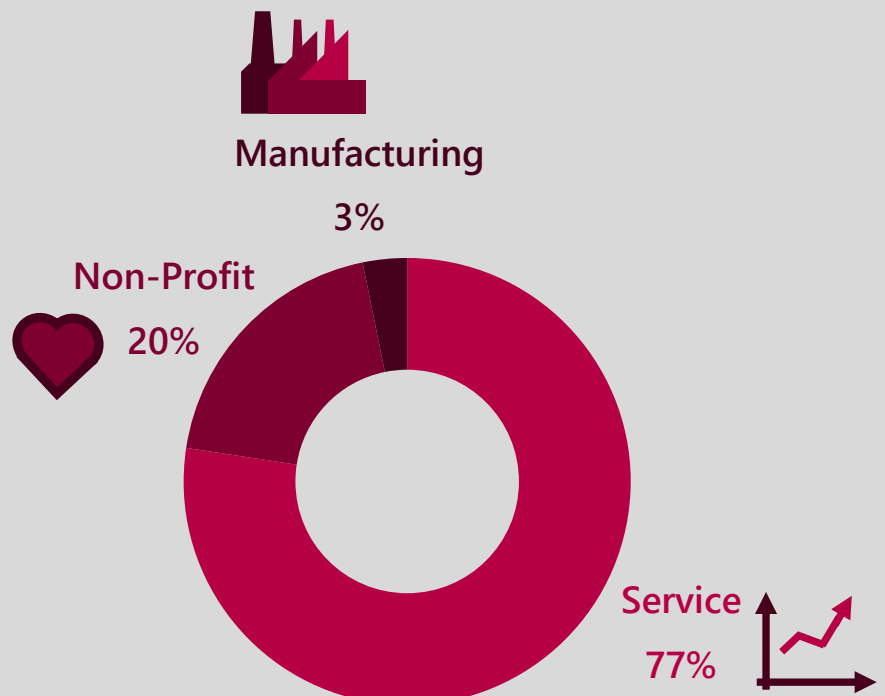
College of Arts and Sciences

Arts and Humanities

Workforce Statistics



Sectors of Employment¹



Note: Percentages may not add to 100 due to rounding

Graduates Rate

SCU

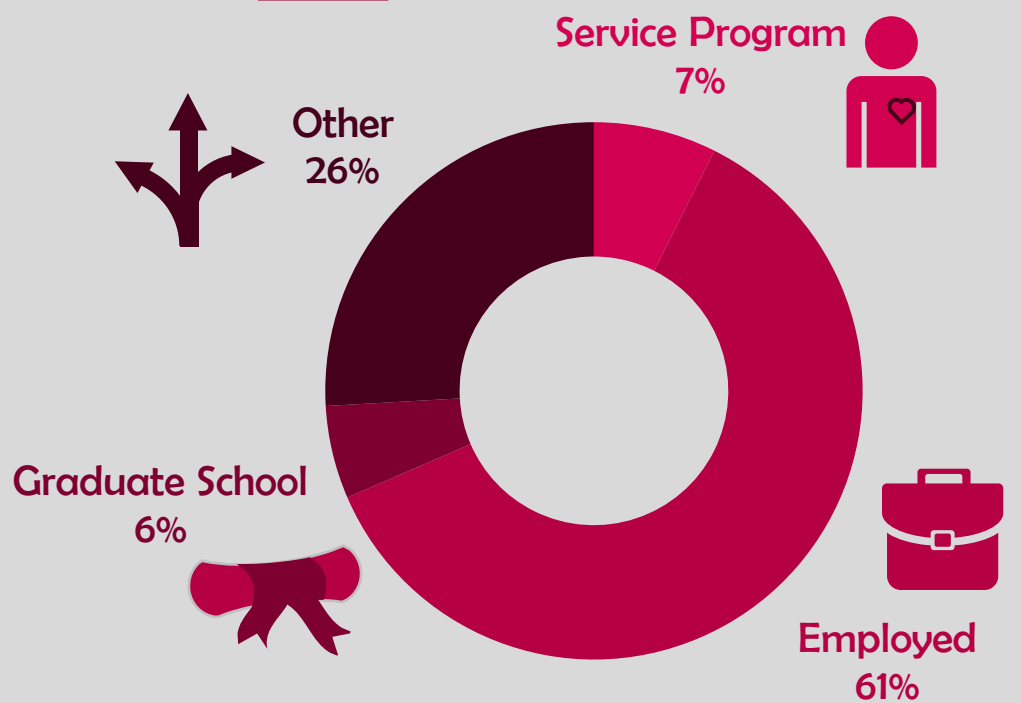
Good to Excellent preparation for...

Career¹ 84%

Life after College² 86%

Graduate Study³ 100%

Where Are They Now?



50% Granted one or more fellowships, teaching assistantships, and/or research assistantships³

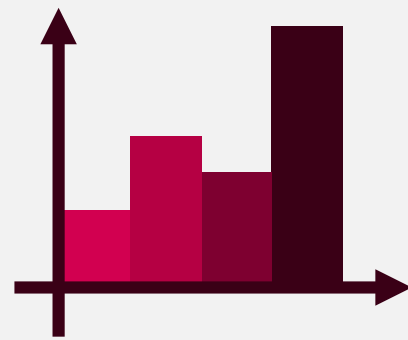
100% Admitted to at least one graduate program⁴

¹ of those working, ² all graduates, ³ of those attending graduate school, ⁴ of those who applied for graduate study, ⁵ of graduates in the job market

The Santa Clara Survey of recent graduates connects employment, education, civic, and satisfaction outcomes to measure the impact of a Santa Clara education. Conducted annually at six-months post-graduation, the 41.9% response rate yields a profile that is representative of the graduating class. Initiated with the class of 2008, these longitudinal data track Santa Clara's progress to ensure an education of citizens and leaders of competence, conscience, and compassion.

Source: first-time, four-year graduates responding to the Survey of Recent Graduates in 2014. For additional information, see www.scu.edu/ir/data/student-outcomes or contact: institutionalresearch@scu.edu

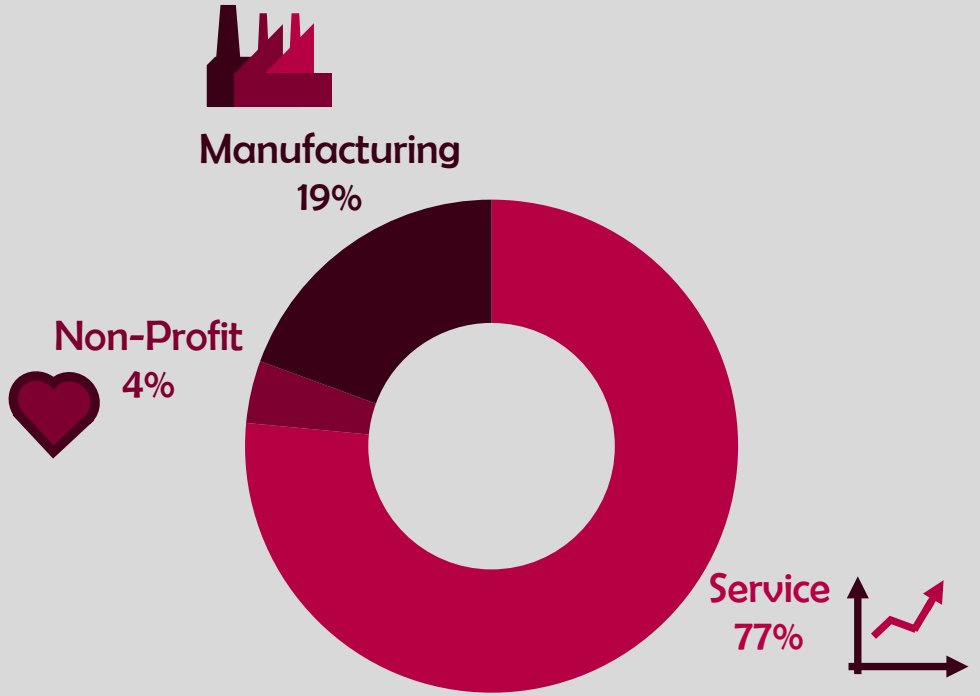
Santa Clara University Class of 2014



Leavey School of Business

Workforce Statistics

Sectors of Employment¹



Note: Percentages may not add to 100 due to rounding

Graduates Rate



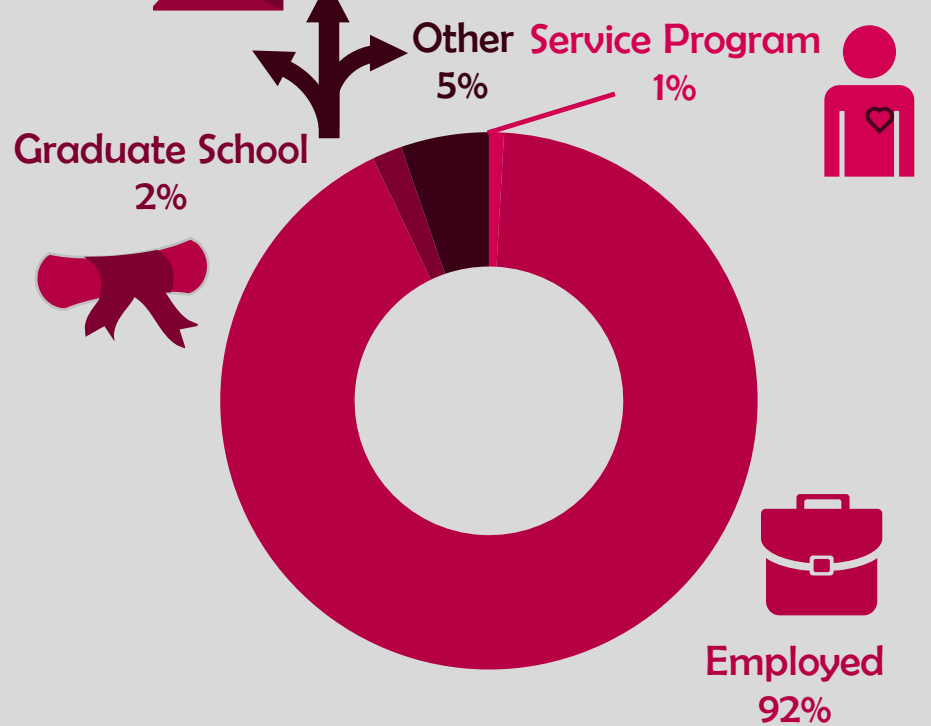
Good to Excellent preparation for...

Career¹ 84%

Life after College² 94%

Graduate Study³ 100%

Where Are They Now?



0%

Granted one or more fellowships, teaching assistantships, and/or research assistantships³

100%

Admitted to at least one graduate program⁴

¹ of those working, ² all graduates, ³ of those attending graduate school, ⁴ of those who applied for graduate study, ⁵ of graduates in the job market

The Santa Clara Survey of recent graduates connects employment, education, civic, and satisfaction outcomes to measure the impact of a Santa Clara education. Conducted annually at six-months post-graduation, the 41.9% response rate yields a profile that is representative of the graduating class. Initiated with the class of 2008, these longitudinal data track Santa Clara's progress to ensure an education of citizens and leaders of competence, conscience, and compassion.

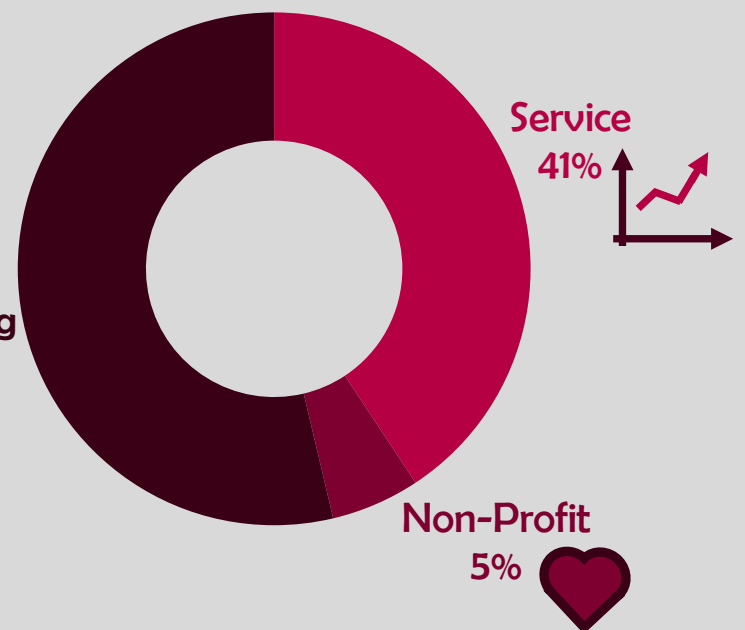
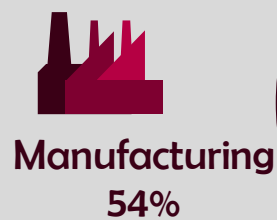
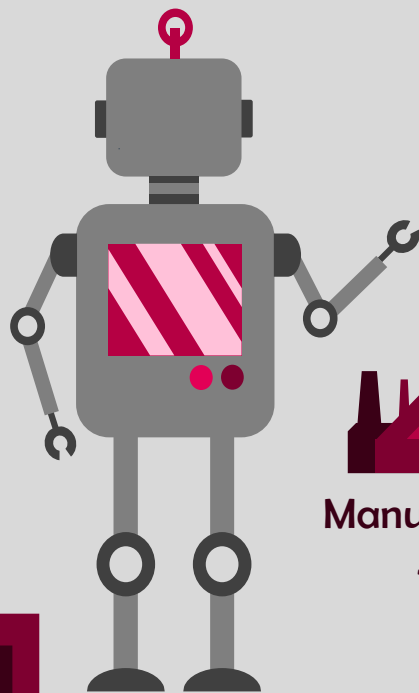
Source: first-time, four-year graduates responding to the Survey of Recent Graduates in 2014. For additional information, see www.scu.edu/ir/data/student-outcomes or contact: institutionalresearch@scu.edu

Santa Clara University Class of 2014

School of Engineering

Workforce Statistics

Sectors of Employment¹



Note: Percentages may not add to 100 due to rounding

Graduates Rate

SCU

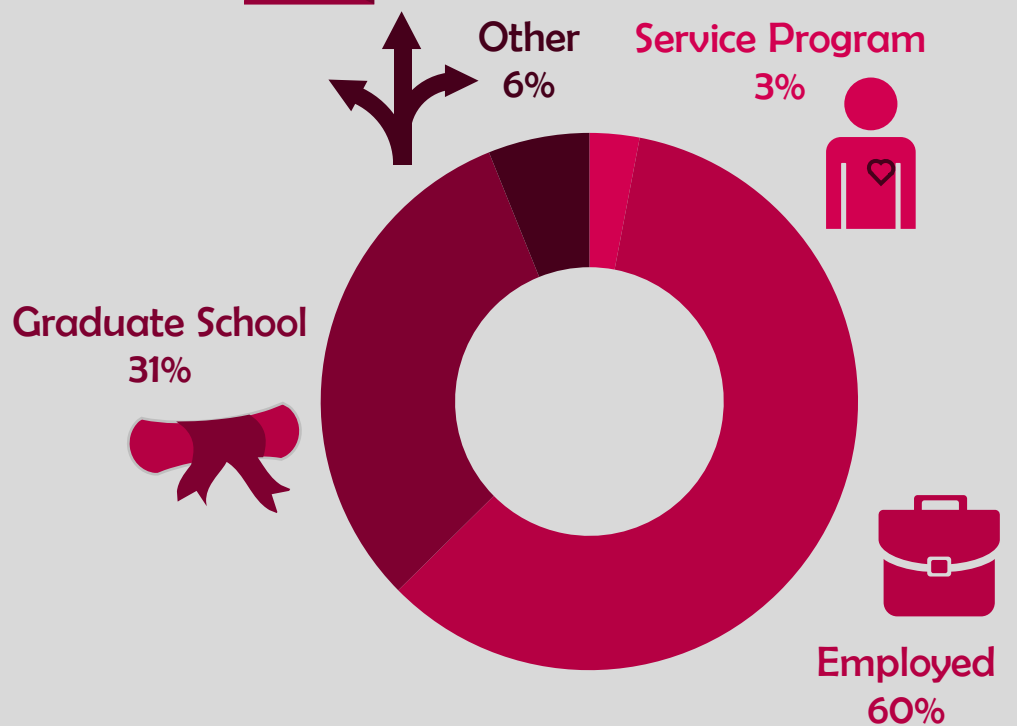
Good to Excellent preparation for...

Career¹ 82%

Life after College² 88%

Graduate Study³ 93%

Where Are They Now?



45%

Granted one or more fellowships, teaching assistantships, and/or research assistantships³

93%

Admitted to at least one graduate program⁴

¹ of those working, ² all graduates, ³ of those attending graduate school, ⁴ of those who applied for graduate study, ⁵ of graduates in the job market

The Santa Clara Survey of recent graduates connects employment, education, civic, and satisfaction outcomes to measure the impact of a Santa Clara education. Conducted annually at six-months post-graduation, the 41.9% response rate yields a profile that is representative of the graduating class. Initiated with the class of 2008, these longitudinal data track Santa Clara's progress to ensure an education of citizens and leaders of competence, conscience, and compassion.

Source: first-time, four-year graduates responding to the Survey of Recent Graduates in 2014. For additional information, see www.scu.edu/ir/data/student-outcomes or contact: institutionalresearch@scu.edu

Santa Clara University Class of 2014

College of Arts and Sciences

Math and Natural Sciences

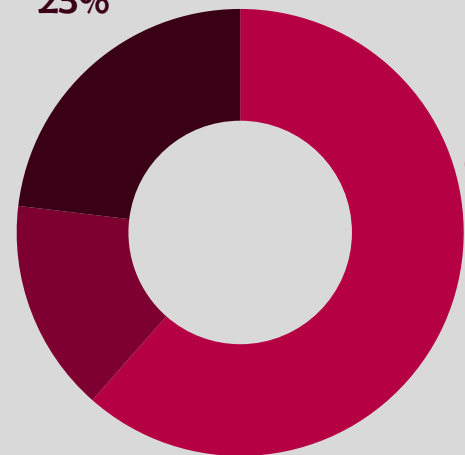
Workforce Statistics



Sectors of Employment¹



Manufacturing
23%



Service
62%

Non-Profit
15%

Note: Percentages may not add to 100 due to rounding

Graduates Rate

SCU

Good to Excellent preparation for...

Career¹ 92%

Life after College² 87%

Graduate Study³ 94%

Where Are They Now?

Service Program
5%



Other
40%

Employed
32%

Graduate School
23%

46% Granted one or more fellowships, teaching assistantships, and/or research assistantships³

100% Admitted to at least one graduate program⁴

¹ of those working, ² all graduates, ³ of those attending graduate school, ⁴ of those who applied for graduate study, ⁵ of graduates in the job market

The Santa Clara Survey of recent graduates connects employment, education, civic, and satisfaction outcomes to measure the impact of a Santa Clara education. Conducted annually at six-months post-graduation, the 41.9% response rate yields a profile that is representative of the graduating class. Initiated with the class of 2008, these longitudinal data track Santa Clara's progress to ensure an education of citizens and leaders of competence, conscience, and compassion.

Source: first-time, four-year graduates responding to the Survey of Recent Graduates in 2014. For additional information, see www.scu.edu/ir/data/student-outcomes or contact: institutionalresearch@scu.edu

Santa Clara University Class of 2014

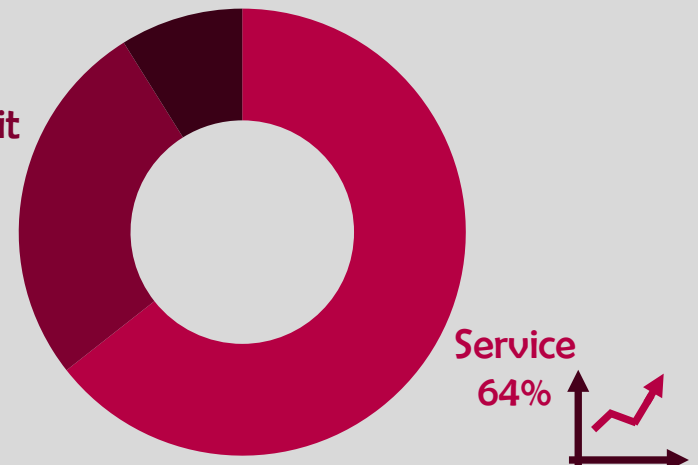
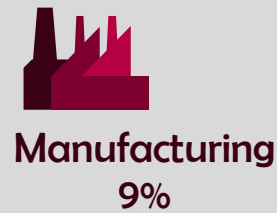
College of Arts and Sciences

Social Sciences

Workforce Statistics



Sectors of Employment¹



Note: Percentages may not add to 100 due to rounding

Graduates Rate



Good to Excellent preparation for...

Career¹ 84%

Life after College² 92%

Graduate Study³ 93%

Where Are They Now?

Service Program
9%

Other
24%

Graduate School
18%

Employed
49%

6%

Granted one or more fellowships, teaching assistantships, and/or research assistantships³

100%

Admitted to at least one graduate program⁴

¹ of those working, ² all graduates, ³ of those attending graduate school, ⁴ of those who applied for graduate study, ⁵ of graduates in the job market

The Santa Clara Survey of recent graduates connects employment, education, civic, and satisfaction outcomes to measure the impact of a Santa Clara education. Conducted annually at six-months post-graduation, the 41.9% response rate yields a profile that is representative of the graduating class. Initiated with the class of 2008, these longitudinal data track Santa Clara's progress to ensure an education of citizens and leaders of competence, conscience, and compassion.

Source: first-time, four-year graduates responding to the Survey of Recent Graduates in 2014. For additional information, see www.scu.edu/ir/data/student-outcomes or contact: institutionalresearch@scu.edu