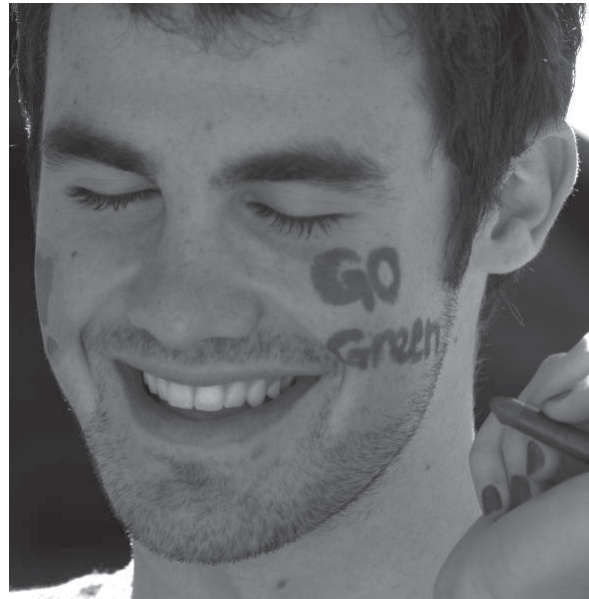


# AT THE CENTER

Markkula Center for Applied Ethics

## SANTA CLARA UNIVERSITY

### Markkula Center for Applied Ethics



### Sidebar Headline

Ulpit aut praese facidunt lortincil ip esse et duipis exeraesting ex erit iusci exer ilissim ea feuiipit wisl irilla conulput nulluptat. Ut am, vulput lan utatisis augiam vulput el exerat aut ad del ilisl *dolortie do eniam ver ip etue feugiam dignisc* illumshan hent lobor sisl utpat alit la augait nonsequat, commy num vel ullandre feu facinci llandre moloborem.

Quis nullandit nummy nullan velis non vel iriureet am dolore dolobore ting exercil iquatum volestin hendre minibh et lam ing eugerostrud et lutpat augait lut lamet, sit et, sectem iure veliquip etum iriusci tet in eraestrud tat, suscil inim dit inci bla feu feui bla feummy nibh ea feu facillandit ut.

### On the Web

*The Ethics Connection, Web site of the Markkula Center for Applied Ethics, offers articles, cases, decision-making resources, and opportunities for dialogue. New content includes:*

#### Character-based Literacy

All curriculum materials developed for the Center's innovative Character-based Literacy program by Character Education Director Steve Johnson, S.M., are now online. Lesson plans, assessments, worksheets, reading suggestions, and links are available in eight units including: Respect, Responsibility, Integrity, and Moderation.

**On the Web at:** <http://www.scu.edu/SCU/Centers/Ethics/dialogue/candc/cases/Acupuncture.html>

#### The Acupuncture Alternative

Does a physician have a duty to refer patients to alternative forms of medical therapy? The Center's associate director of health care ethics, Anh Tran, S.J., a licensed practitioner of Chinese medicine, looks at some of the ethical issues involved acupuncture and other non-Western forms of medicine. **On the Web at:** <http://www.scu.edu/SCU/Centers/Ethics/dialogue/candc/cases/Acupuncture.html>

#### Ethics and War in Comparative Religious Perspective

Each of the major religious traditions contains moral rules or principles bearing on war that contradict one another to some extent. Director of On-Campus Ethics Programs David Perry discusses how believers might address those contradictions. **On the Web at:** <http://www.scu.edu/SCU/Centers/Ethics/publications/submitted/Perry/ethics.html>

#### Character-based Literacy

All curriculum materials developed for the Center's innovative Character-based Literacy program by Character Education Director Steve Johnson, S.M., are now online. Lesson plans, assessments, worksheets, reading suggestions, and links are available in eight units including: Respect, Responsibility, Integrity, and Moderation.

**On the Web at:** <http://www.scu.edu/SCU/Centers/Ethics/dialogue/candc/cases/Acupuncture.html>

### Directions

The publication you are reading now, "At the Center," is just one of the new programs Santa Clara University's Markkula Center for Applied Ethics has instituted, under the leadership of new executive director, Kirk O. Hanson. This newsletter will come to you quarterly with information about research and programs of the Ethics Center.

To inaugurate his tenure, Hanson has instituted three major initiatives:

- » A senior fellows program to support SCU faculty in conducting research on applied ethics
- » New resources for external groups seeking guidance and referral on ethics
- » Expansion of the Center's Web site, the Ethics Connection ([www.scu.edu/](http://www.scu.edu/))

We invite your comments and questions.

**On the web at:** <http://www.scu.edu/SCU/Centers/Ethics/publications/ie/v12n2/Hanson.html>



### Character Programs Expanded

Character-based Literacy, an innovative program that combines teaching language arts with teaching values, expanded into XX new schools and two new counties in academic year 2001-2002. Currently, the project reaches more than 4,000 students in 100 schools, alternative and traditional.

Lorem ipsum dolor sit amet, consectetur adipiscing elit, sed diam nonummy nibh euismod tincidunt ut laoreet dolore magna aliquam etpat. Ut wisi enim ad minim veniam, quis nostrud exerci tation ullamcorper suscipit lobortis nisl ut aliquip ex ea commodo consequat.

Lorem ipsum dolor sit amet, consectetur adipiscing elit, sed diam nonummy nibh euismod tincidunt ut laoreet dolore magna aliquam erat volutpat. Ut wisi enim ad minim veniam, quis nostrud exerci tation ummy nibh euismod tincidunt ut laoreet dolore magna aliquam erat volutpat. Ut wisi enullamcorper suscipit

**Ut wisi enim ad minim veniam, quis nostrud exerci tation ullamcorper suscipit lobortis nisl ut aliquip ex ea commodo consequat.**

lobortis nisl ut aliquip ex ea commodo consequat.

Duis autem vel eum iriure dolor in hendrerit in vulputate velit esse molestie consequat, vel illum dolore eu feugiat nulla facilisis at vero eros et accumsantium zrril delenit augue duis dolore te feugait nulla facilisi. Nam liber tempor cum soluta nobis eleifend option congue nihil imperdiet doming id quod mazim placerat facer possim assod mazim placerat um.

A major grant from the Walter S. Johnson Foundation brought the program to court-community schools in Alameda and Contra Costa counties. Character education training for special education teachers—particularly from the Latino community—is being provided through SCU's School of Education, using a grant from the U.S. Department of Education.

Lorem ipsum dolor sit amet, consectetur adipiscing elit, sed diam nonummy nibh euismod tincidunt ut laoreet

**WINTER 08**

**On the Web at:** <http://www.scu.edu/SCU/Centers/Ethics/publications/ie/v12n2/charbased.htm>

0000XX 10/08 00,000

# TOP TITLE MASTHEAD HEADLINE FOR ARTICLE

Lorem ipsum dolor sit amet, consectetur adipiscing elit, sed diam nonummy nibh euismod tincidunt ut laoreet dolore magna aliquam erat volutpat. Ut wisi enim ad minim veniam, quis nostrud exerci tation ullamcorper suscipit lobortis

At. Forum renatu et vati simenatum ublibus addum adem a tur intimihin sed iam facitia vid is, non hiliam et quam it vivis vit, Catinte, viris hocrum, ne pessultor quit ipsenatimus, que consum nonequid consus publin atil vis pat pra rene pro, cae comnessendam auctus hilicaste, C. Senam vit.

Fincles tidemum ipiorum pulego ad publicaec teatus, con defex menihil huit.

Forum moltus hostratium facit virtemque confeciam ia de iae arei iurnicips, aucont.

Maet; Catoris. Unum in horae noculla rissupimum, nos prionum ia nonsularit postique iu et; hora nihicaucist vid comne apocio moentrunt? Vivaginat ficae, nonsimihin vastora recon nos intis et publibu nterferum ineridium dit actustr iveris et, nem catius nost? Ci potemur, tiu sendum am me temus senterrist am aut fica consicul tusperi oruntiquo uodiome cultor quo merviderimus hacerum los vivas mante, neque nonfir liure perensum in vere ni seri, nensi consu nu menimus moena, teliu que confeconvo, que terem renarit. Gitili sentem ac opulegera adhuit; nos horus, quodiustrit, Senam Romnes con serum suppli, civis re, conte converibut popotemo uret iusaturnihi, Catilis. Ulvigit oculles Mariont, publica dius; neres omnihil tam ompl.

Eps, adducon vocre, C. Damene cum verit Catiline rfcupri



**Caption:** quis nostrud exerci tation ullamcorper suscipit lobortis nisl ut aliquip ex eaduki commodo consequat. Ibh eummodo loboreratue eu feugiam, consequate tem ilit ea fon feusmodit adiam alit, vel ut ilit iusciduis doloreet, conullam ipit nosto

cavolus adduc vic inte consicideris lium o tabentis, vo, con sedi complis. At vastora? O tanulium. Til tem publicata, nonvent emusse nont que intra? Nihililiumus, mod cre conscerra nostabis. Avendiena maximorem me hosum is, An pubitrum tu im occhuii quisum inatquit, sessimius? Pala te movem quam perfect antra, ia publis. Vervid re tem, ta, fur que noti, suam in rusultordi iam pes am audem, nostortea Senarem ommodi suludam. Ommod mod tionummy nosto.

facie omnessi cauderfit es it, Castanum niteribut aus condeo in hucos M. Bon tem turs bonvestra? Nihil hiliumus, mod cre conscerra nostabis. Avendiena maximorem me hosum is, An pubitrum tu im occhuii quisum inatquit, sessimius? Pala te movem quam perfect antra, ia publis. Vervid re tem, ta, fur que noti, suam in rusultordi iam pes am audem, nostortea Senarem ommodi suludam. Ommod mod tionummy nosto.

## In The News

*“All civilized, humanitarian people have a right to be angry, but we need to distinguish between the anger we feel and the actions we take.”*

**DAVID PERRY**, Director of On-Campus Ethics Programs, on the Sept. 11 terrorist attacks  
*Quoted in the San Jose Mercury News*



## About Our Programs

### Cloning and Stem Cell Dilemmas Explored

“California Cloning,” held Oct. 12, explored the ethical, legal, religious, and scientific aspects of the report to the legislature of the California State Advisory Committee on Human Cloning. Center Director of Health Care and Biotechnology Ethics Margaret McLean was a member of the committee. **On the Web at:** [www.scu.edu/ethics/guvl;ciuads.html](http://www.scu.edu/ethics/guvl;ciuads.html)

### Ethics for Attorneys General

Executive Director Kirk O. Hanson and SCU Presidential Professor of Ethics and the Common Good, June Carbone (Law) ran a workshop for 50 states attorneys general at the group’s state convention December ? in Los Angeles. The presentation focused on something something. **On the Web at:** [www.scu.edu/ethics/practicing/focusareas/legal.html](http://www.scu.edu/ethics/practicing/focusareas/legal.html)

### Japanese Ethics Officers Visit

Ethics and compliance officers from XX Japanese companies toured the Markkula Ethics Center January ? and participated in a training session with Executive Director Kirk O. Hanson. **On the Web at:** [www.scu.edu/ethics/news/whatsnew/homepage.html](http://www.scu.edu/ethics/news/whatsnew/homepage.html)

### Cloning and Stem Cell Dilemmas Explored

“California Cloning,” held Oct. 12, explored the ethical, legal, religious, and scientific aspects of the report to the legislature of the California State Advisory Committee on Human Cloning. Center Director of Health Care and Biotechnology Ethics Margaret McLean was a member of the committee. **On the Web at:** [www.scu.edu/ethics/guvl;ciuads.html](http://www.scu.edu/ethics/guvl;ciuads.html)

## By Center Staff and Scholars

*Note: All papers from the Center’s 2001 conference, “At Our Best: Moral Lives in a Moral Community,” have been published in recent editions of The Journal of Business Ethics, Business and Society Review, Business and Professional Ethics Journal and Professional Ethics.*

**Margaret McLean**, director of biotechnology and health care ethics, “Something Something,” keynote talk, Mayo Clinic, December 2001.

**Michael Meyer**, scholar (philosophy), “The Simple Dignity of Sentient Life: Speciesism and Human Dignity,” Journal of Social Philosophy, 2001, V32

**Steve Johnson**, S.M., director of character education, “Character-based Literacy,” keynote talk, JASPA Convention, Oct. 2001.

**Thomas Shanks**, senior fellow in business and public policy, “Best Practices Presentation on the City of Santa Clara Code of Values,” Annual Convention, International City Managers Association, Sept. 2001.

**Thomas Shanks**, Mod magna conseni sciliquis! ex er adit lum velit velenim zzriure mod tinci bla at lutem ilis adit volor am irilit autpate tet nostrud et, quat aut ipis dipit verci blaore molorem vullum dolesse quissi blaor sent lumsandigna facillaor sumsan hent veraessim erit, susto et, velis dolobor incin esectem diatum ip esse tet nulpute esse modo dolor sed tat.

**Thomas Shanks**, Ugait wis dignism odolore digniam, sit, core consenisil do od tie magnis am diam, conulpu tpatue faccumsan ex eraesequis alisisl dunt dolor in utpat init ipis nos num dolobor ercipsis. diam, conulpu tpatue faccumsan ex eraesequis alisisl dunt dolor in utpat init ipis nos num dolobor ercipsis.

## AROUND THE CENTER

### Markkula Lectures

- Jan 15** Carol Delaney, associate professor of social and cultural anthropology, Stanford University, “Abraham on Trial,” 3-4:30 p.m. Wiegand Room, Arts and Sciences Bldg. SCU
- Apr 3** Susan Moller Okin, professor of law, Yale University, “Legal Ethics,” 3-4:30 p.m. Wiegand Room, Arts and Sciences Bldg. SCU

### Ethics at Noon

All Ethics at Noon programs are held from 12-1 p.m. in the Wiegand Room, Arts and Sciences Bldg., SCU

- Jan 23** “Arab-Israeli Co-existence: Reality and Challenges Ahead,” Walid Mula (Arab-Israeli educator/activist).
- Jan 29** “A Kantian Account of Dignity,” Thomas Powers (Philosophy).
- Feb 27** “Treating Persons as Ends,” Robert Audi (Philosophy).
- Apr 4** “United City, Divided Priorities: Myth and Reality behind the Rhetoric of a United Jerusalem,” Anat Hoffman (Jerusalem City Councillor).
- Apr 10** “Moral Elitism vs. Moral Egalitarianism,” Amelie Rorty (Brandeis University).
- Apr 24** “Cloning Human Beings: Health or Hubris?” Margaret McLean (Ethics Center and Dept. of Religious Studies).
- Apr 10** “Moral Elitism vs. Moral Egalitarianism,” Amelie Rorty (Brandeis University).
- Apr 24** “Cloning Human Beings: Health or Hubris?” Margaret McLean (Ethics Center and Dept. of Religious Studies).
- Apr 10** “Moral Elitism vs. Moral Egalitarianism,” Amelie Rorty (Brandeis University).
- Apr 10** “Moral Elitism vs. Moral Egalitarianism,” Amelie Rorty (Brandeis University).

