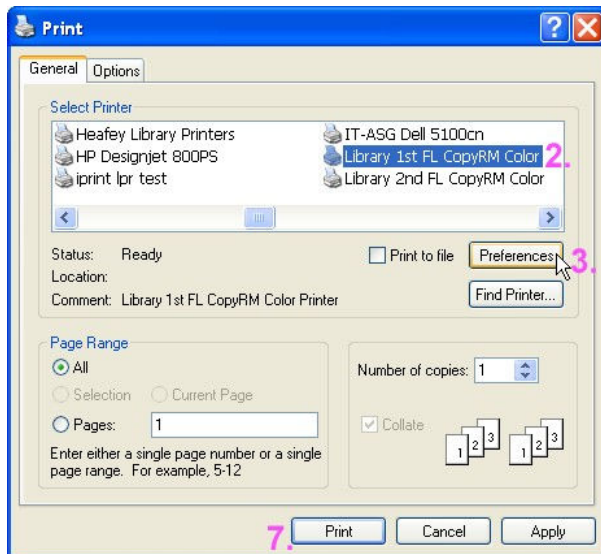
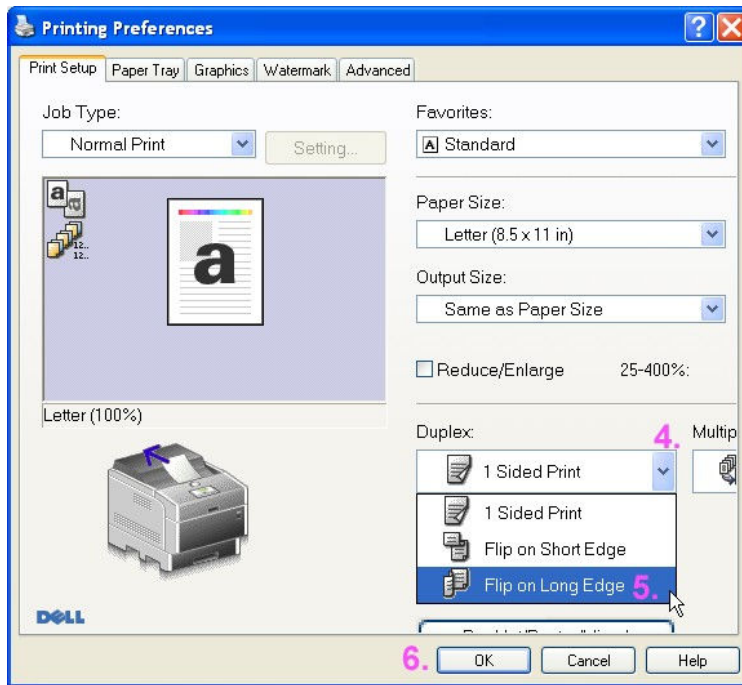


## How to Print Double-Sided on the Color Dell 5110 Printer under Windows XP

1. In your application, click on the *print* option to bring up the printer dialog box.
2. Select your printer. In our example, we are selecting the Library 1<sup>st</sup> FL CopyRM Color printer.
3. Now, click on the *Preferences* or *Properties* button (depends on your application).



4. Click on the Drop-down button for the Duplex option.
5. In the drop-down list, select *Flip on Long Edge*.
6. Click the *OK* button.



7. Back at the Printer dialog box, click on the *Print* button to send your print job to the printer.

To go back to single sided printing, you need to select *1 Sided Print* in step 5.