

**ONLINE RECRUITMENT FOR  
QUALITATIVE INTERVIEWS OF  
JUSTICE-INVOLVED PEOPLE:  
POSSIBILITIES AND LIMITS**



**SARAH LAGESON, RUTGERS - NEWARK  
CAROLINA RIBEIRO CALIMAN, RUTGERS - NEWARK  
ELSA CHEN, SANTA CLARA UNIVERSITY  
ERICKA ADAMS, SAN JOSE STATE UNIVERSITY**

**LAW & SOCIETY ASSOCIATION - DENVER, COLORADO**

**JUNE 6, 2024**

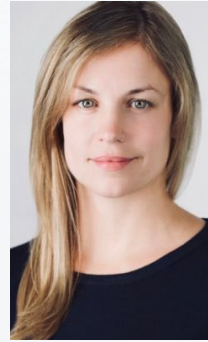
# CLEAN SLATE RESEARCH TEAM



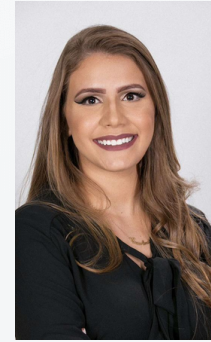
**Elsa Chen, PI**  
Professor,  
Santa Clara Univ.



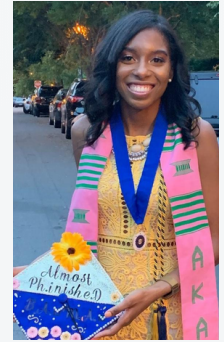
**Ericka Adams, Co-PI**  
Associate Professor,  
San Jose State Univ.



**Sarah Lageson, Co-PI**  
Associate Professor,  
Rutgers-Newark



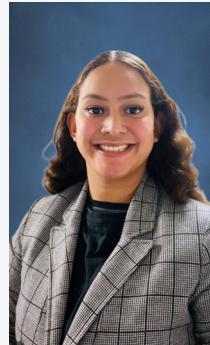
**Carolina  
Ribiero Caliman**  
Rutgers PhD Candidate



**Raven Lewis**  
Rutgers PhD  
Candidate



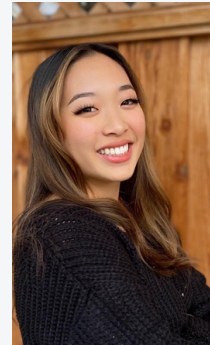
**Eva Gonzalez**  
SJSU Master's  
2024



**Desaray  
Castellanos Ordonez**  
SJSU Master's 2023



**Deirdre Crawford**  
SCU Class of  
2022



**Maile Belnap**  
SCU Class of  
2024



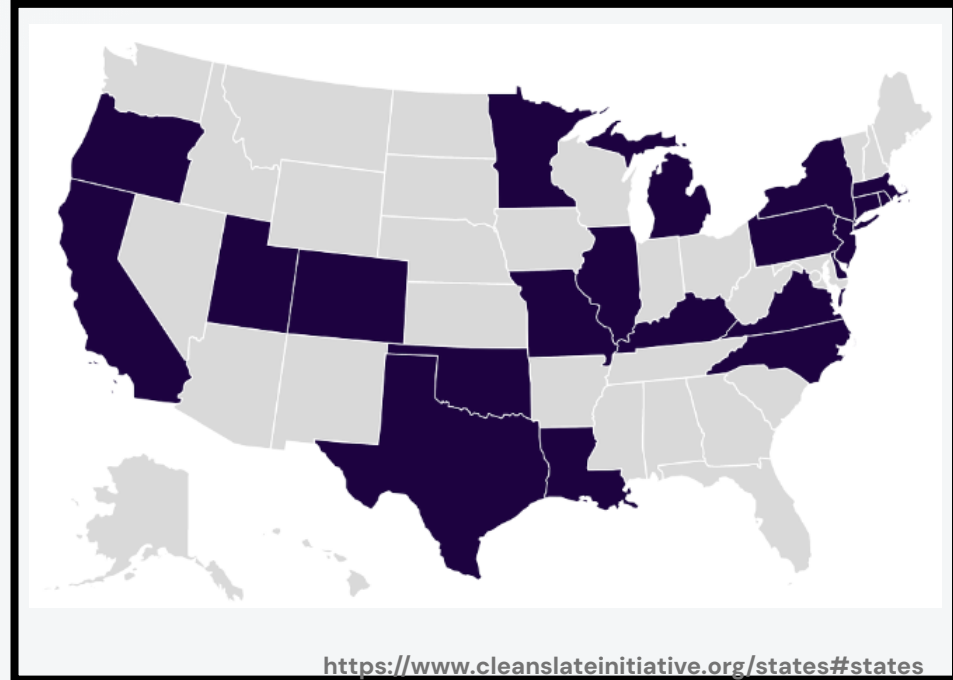
**Rachel Statten**  
SCU Class of  
2024



**Sam Campos**  
SCU Class of  
2025

# AUTOMATED RECORD CLEARANCE

- Expungement without filing a petition or (often) payment of a fee by the person who is the subject of the records to be sealed or erased
- Automatic clearance refers to the legal filing process as initiated by the state
- Automated clearance uses algorithmic or computerized means to accomplish automatic expungements
- Currently, 21 states have at least one statutory automatic record clearing provision



# STUDY DESIGN



**4 states with  
automatic  
expungement:  
PA, UT, CA, NJ**

**Study Period:  
2021-23**

**STATES + YEARS**

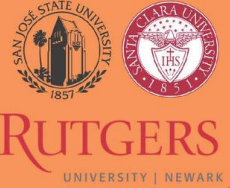


**Clean Slate-eligible  
participants  
+ Follow-ups 1 year  
later**

**Community & Govt.  
Representatives**

**INTERVIEWS**

**Seeking Paid  
Participants For Study  
on Criminal Records**



**Study Title: The Impact of Automated Record Clearance  
on Individuals, Families, and Communities**

## ABOUT

The study will address the effects of criminal records on individuals' lives. We will also investigate the impact of automated/petition-based record clearance on people's experiences and the experiences of their families and communities.


## ELIGIBILITY


- People 21 years of age or older convicted of a cannabis offense in California before July 1, 2019

OR

- People who have been arrested, but not convicted or incarcerated, for ANY misdemeanor after January 1, 2021

## FOR QUESTIONS:

 Email the study team at [cacannabisstudy@gmail.com](mailto:cacannabisstudy@gmail.com)

 Text us at (669)-696-3967

 Follow us on Twitter @cleanslatestudy

## INFORMATION

- Your responses are confidential. Only our research team will have access to any of the information you tell us, and only the researchers will know you participated in this study.
- Interviews will last approximately 45-60 minutes and be conducted via zoom.

## COMPENSATION WILL BE PROVIDED

\$40 gift card for an initial interview  
\$40 gift card if selected for a follow-up interview



**SCAN FOR,  
SIGNUP,  
WEBSITE, SURVEY  
ACCESS**

# COMPLETED INTERVIEWS

State	Expungement-eligible individuals	Community/govt. representatives	Total
California	23	28	51
New Jersey	20 + 2	10	32
Pennsylvania	24 + 1	15	40
Utah	43 + 5	11	59
Other states	0	5	5
<b>Total</b>	<b>110 + 8</b>	<b>69</b>	<b>187</b>

# WORKFLOW

## 1 - Recruitment



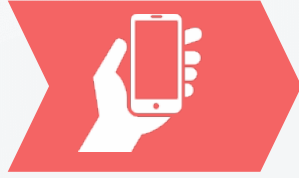
Distribute digital flyers  
w/ links to our website

## 2 - Intake



Initial screening via  
Qualtrics intake surveys

## 3 - 2nd screening



Phone + text screening  
via Google Voice

## 4 - Scheduling



Schedule interviews via  
Calendly, send link +  
consent form

## 5 - Interview



Conduct recorded Zoom  
interviews

## 6. Compensation



Gift card sent via  
Tango Card

## 7. Transcription



Upload Zoom recording  
to Otter.ai

## 8. Editing



Manually correct  
Otter.ai transcripts

## 9. Coding



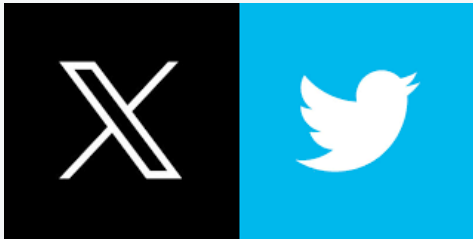
Upload transcripts to  
Atlas.ti, code each 2x

## 10. Analysis + Writing



Generate thematic memos  
+ analyze in Atlas.ti

# DIGITAL RECRUITMENT APPROACHES



# INTERVIEW OUTCOMES

INTERVIEW OUTCOMES	Digital Flyering	MTurk	Prolific	Direct Referral	Total
Intake Surveys	1422	875	409	NA	2706
Self Reported as Eligible	451	158	76	NA	685
Suspicious IP (not contacted)	261	13	0	NA	274
Unresponsive	102	82	40	NA	224
Invalid Contact Information	5	53	3	NA	61
Eligible but not interviewed	9	0	1	NA	10
Ineligible after second screening	6	1	2	NA	9
Declined during second screening	4	0	0	NA	4
No show	8	0	2	0	10
Interviewed but flagged					

# YIELDS + COSTS

Yields and Costs	Digital Flyering	MTurk	Prolific
N pre-screened	1422	875	409
N self-reported as eligible	451 (31.7% of pre-screened)	458 (18% of pre-screened)	76 (18.6% of pre-screened)
N interviewed	56 (3.9% of pre-screened, 11.3% of eligible)	9 of (1% pre-screened, 5.7% of eligible)	28 (6.3% of pre-screened, 34% of eligible)
Total cost to advertise / pre-screen	\$476.68 Nextdoor = \$186 Facebook + Instagram = \$291	\$0.07 * 875 = \$61.75	\$0.26 * 409 = \$106.34
Total spent on participant compensation	\$41.40 * 56 = \$2318.40	\$41.40 * 9 = \$372.60	\$53.33 * 28 = \$1493.24
Total spent: successful	\$2336.88	\$373.23	\$1500.52

# REPRESENTATIVENESS ANALYSIS: RACE OF INTERVIEWED PARTICIPANTS

Representation	Digital Flyering (N = 56)		MTurk (N = 9)		Prolific (N = 28)		Referral (N = 16)	
	N	%	N	%	N	%	N	%
Asian	3	5.4%	1	11.1%	2	7.1%	1	6.3%
Biracial	1	1.8%	0	0	2	7.1%	1	6.3%
Black	12	21.4%	1	11.1%	7	25%	5	31.3%
White	34	60.7%	7	77.8%	15	53.6%	3	18.8%

## BENEFITS

- Potential cost savings
- Convenience
- Broader geographic coverage
- Platforms do some pre-screening
- Potential for targeted outreach
- Can implement real-



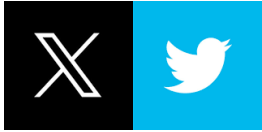
## SHORTCOMINGS + CONCERNS

- Bots + scammers
- Costs – fees, labor
- Harder to establish trust + rapport
- Can be hard to verify “veracity” of respondents
- Some platforms control access to participant

# KEY TAKEAWAYS

- 1 Online recruitment can be a useful way to recruit hard-to-reach and geographically diverse participants for qualitative interviews
- 2 Methodologically rigorous online recruitment can be costly in terms of money, labor, and time
- 3 Costs and yields vary between approaches and platforms - useful to compare
- 4 Careful intake, filtering, and pre-screening are essential to ensure sample integrity and weed out bots and scammers
- 5 Screening, scheduling, transcription verification require hands-on and personal engagement
- 6

# THANK YOU!



@CleanSlateStudy



@RecordClearanceResearch

Our project website:



Contact Elsa Chen:

