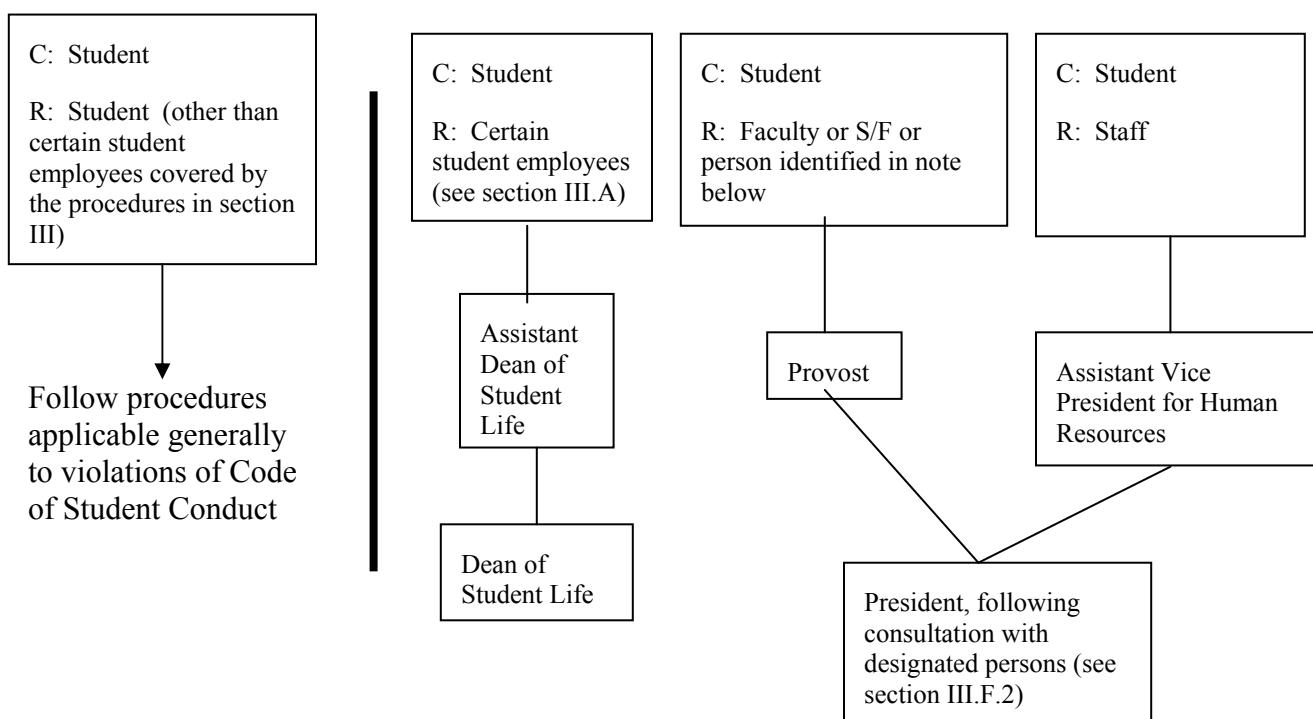


Flow charts depicting lines of formal resolution

Notes:

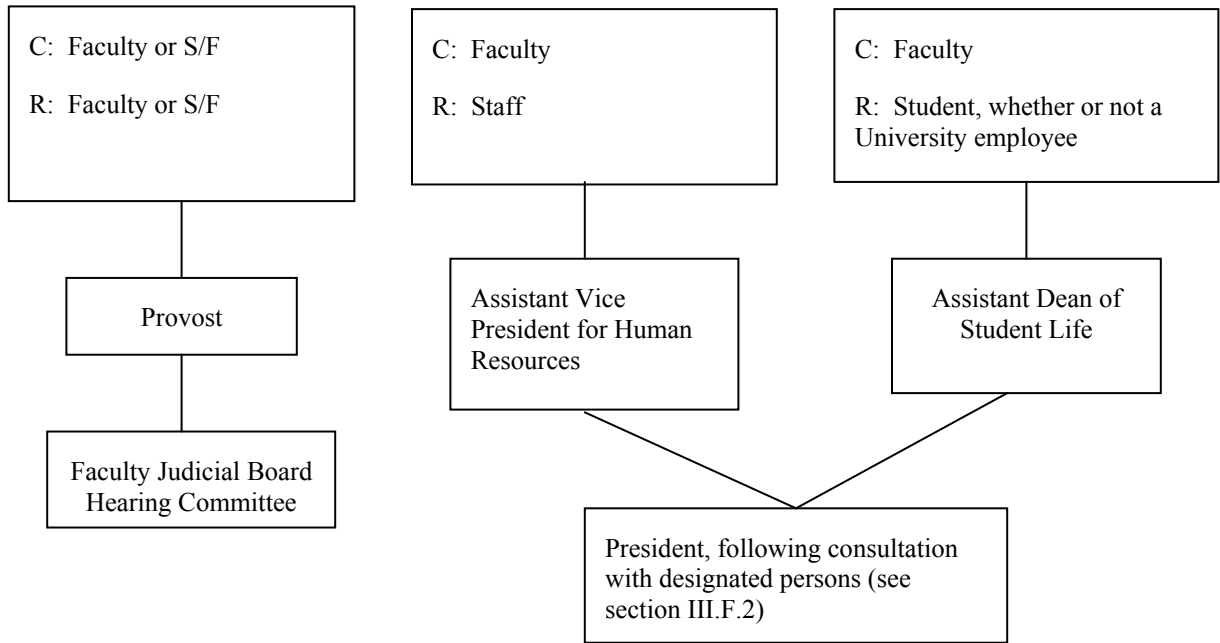
- The first row identifies the role of the complainant (C) and respondent (R) in the University community at the time of the alleged conduct; the second row identifies the initial decision maker; the third row identifies the appellate decision maker
- The symbol "S/F" refers to a person holding both a staff appointment and a continuing faculty appointment
- These charts do not depict lines of formal resolution for certain cases involving selected administrators (see sections III.E.2 and III.F.4)

A. Complaints by students (whether or not the student complainant was also an employee of the University)



Note: The Provost is the initial decision maker and the President is the appellate decision maker in the following additional case: the complainant is a student, the respondent is a staff member with a faculty appointment that is not a continuing faculty appointment, and the complaint arises by virtue of staff member's alleged conduct in the role of instructor.

B. Complaints by faculty (including some by S/F)



C. Complaints by staff (including some by S/F)

