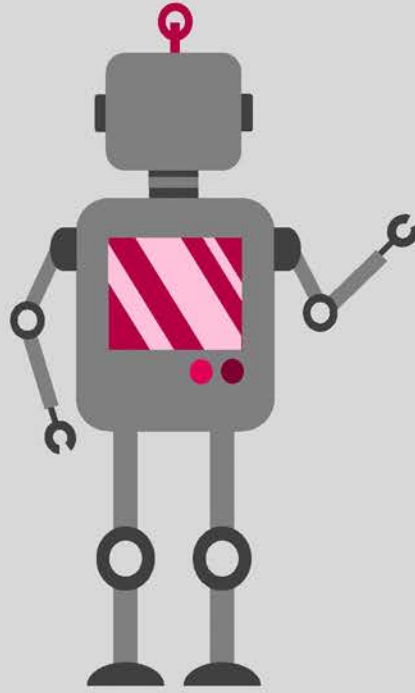


# Santa Clara University Class of 2022

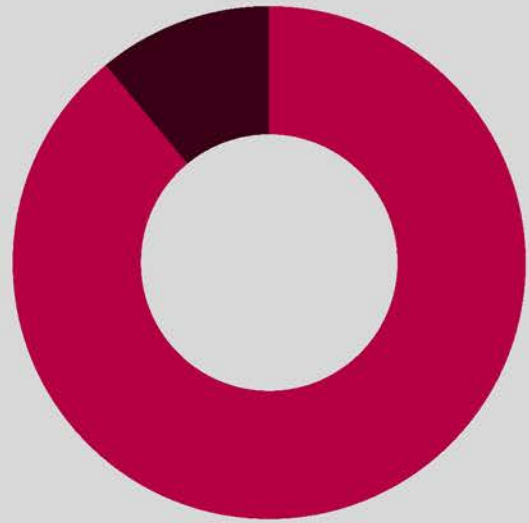
School of Engineering

## Workforce Statistics



## Sectors of Employment<sup>1</sup>

Public/Government  
11%



Private, for-profit  
89%



Note: Percentages may not add to 100 due to rounding

## Graduates Rate

SCU

Good to Excellent preparation for...

Career<sup>1</sup> 70%

Life after College<sup>2</sup> 50%

Graduate Study<sup>3</sup> 60%

## Where Are They Now?

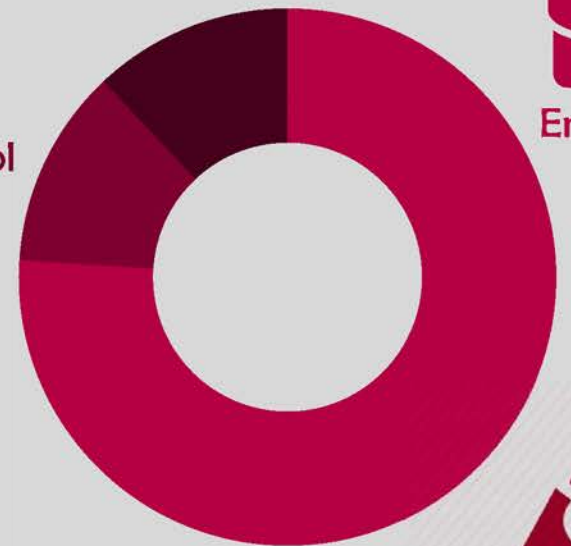
Other  
12%



Graduate School  
12%



Employed  
76%



40%

Granted one or more fellowships, teaching assistantships, and/or research assistantships<sup>3</sup>

Voted in most recent national or state election

58%



<sup>1</sup> of those working, <sup>2</sup> all graduates, <sup>3</sup> of those attending graduate school, <sup>4</sup> of those who applied for graduate study, <sup>5</sup> of graduates in the job market