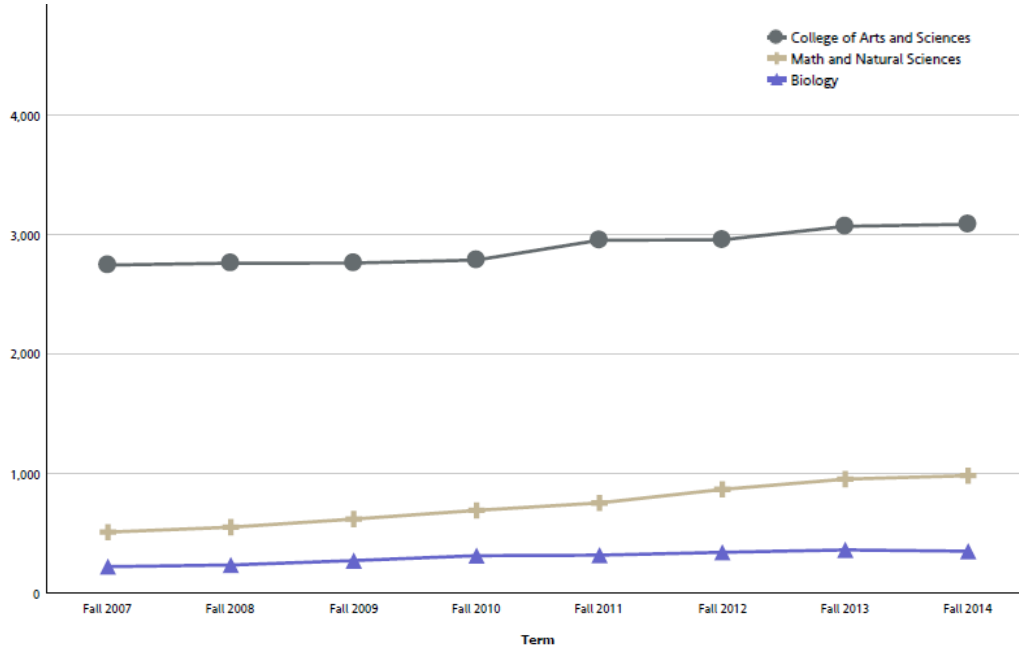


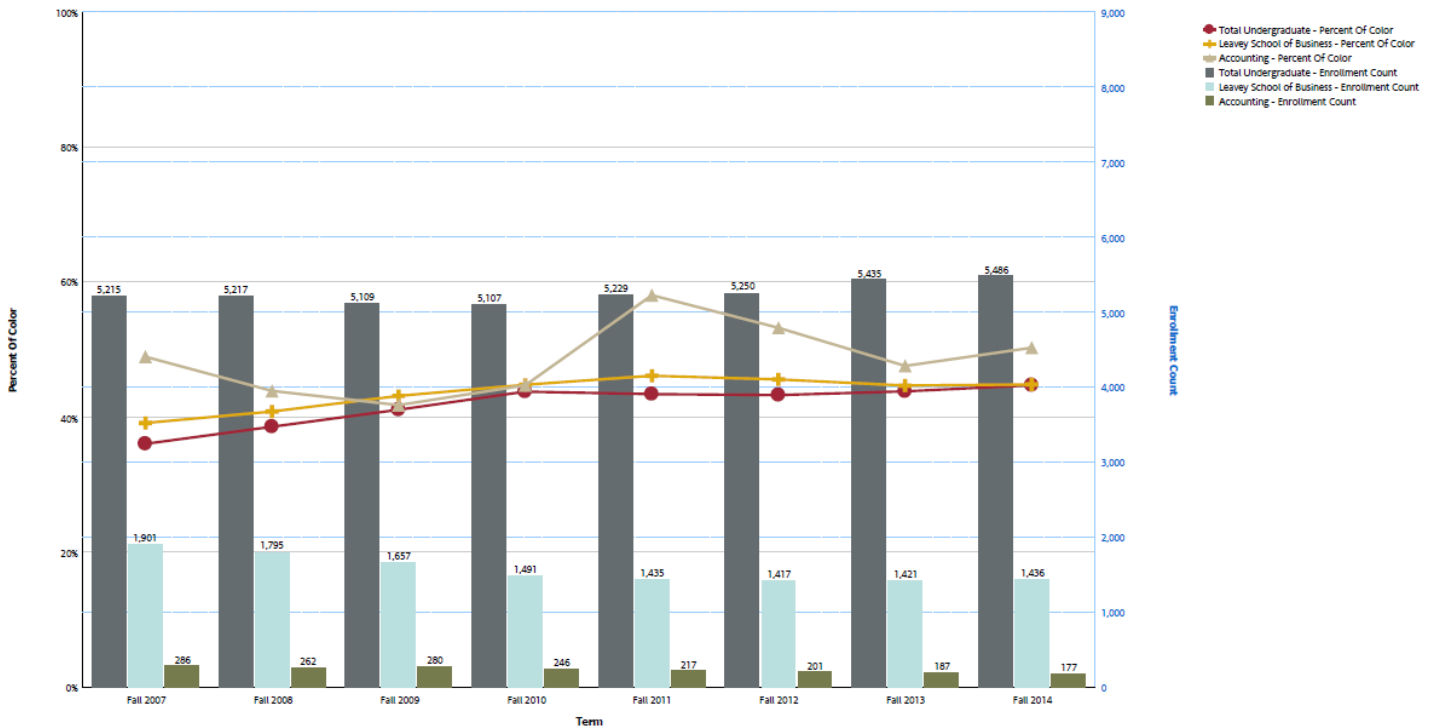
PROGRAM REVIEW – Example Charts Undergraduate Enrollment

The charts below provide examples of the many ways to display the data from the reports.

In this example, the unduplicated headcount of a specific major is compared to its respective cluster and college headcount.



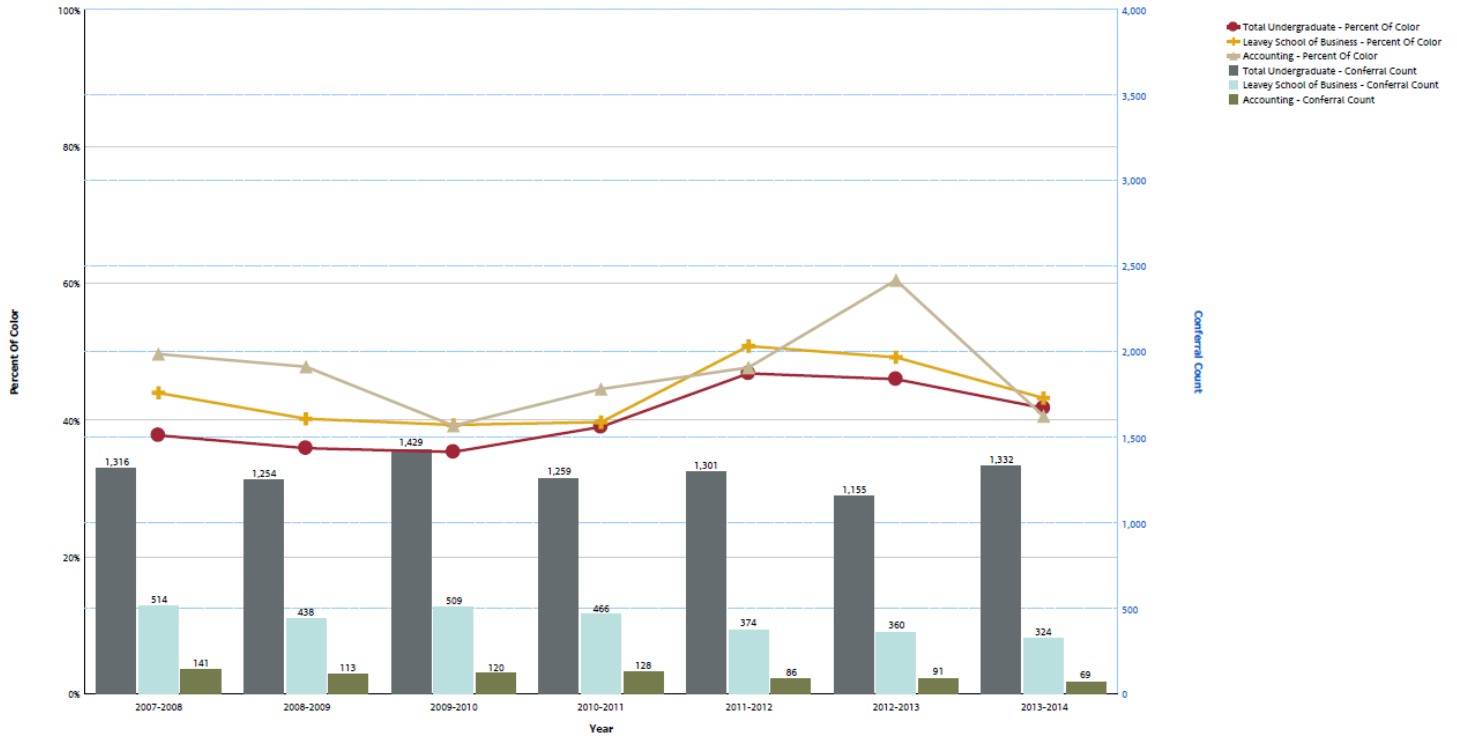
In this example, the unduplicated headcount of a specific major is compared to its respective school and total undergraduate headcount. The percent of color is also shown for the major, school, and total undergraduate population.



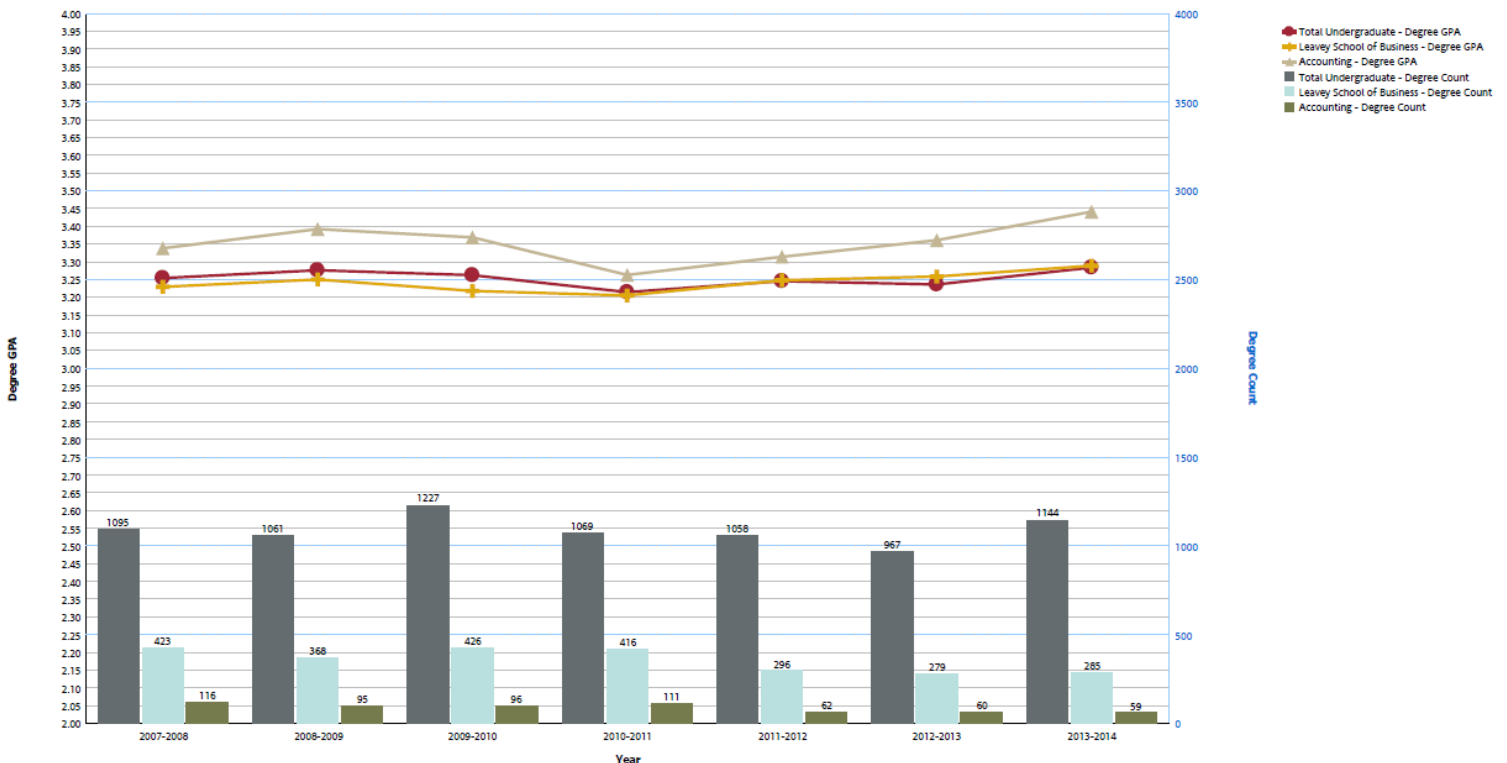
PROGRAM REVIEW – Example Charts Undergraduate Degrees

The charts below provide examples of the many ways to display the data from the reports.

In this example, the total degrees conferred for a specific major is compared to its respective school and the total undergraduate count of degrees conferred. The chart also displays the percentage of students of color for the major, school, and total undergraduate. This is a count of degrees; as such, it may count students more than once.



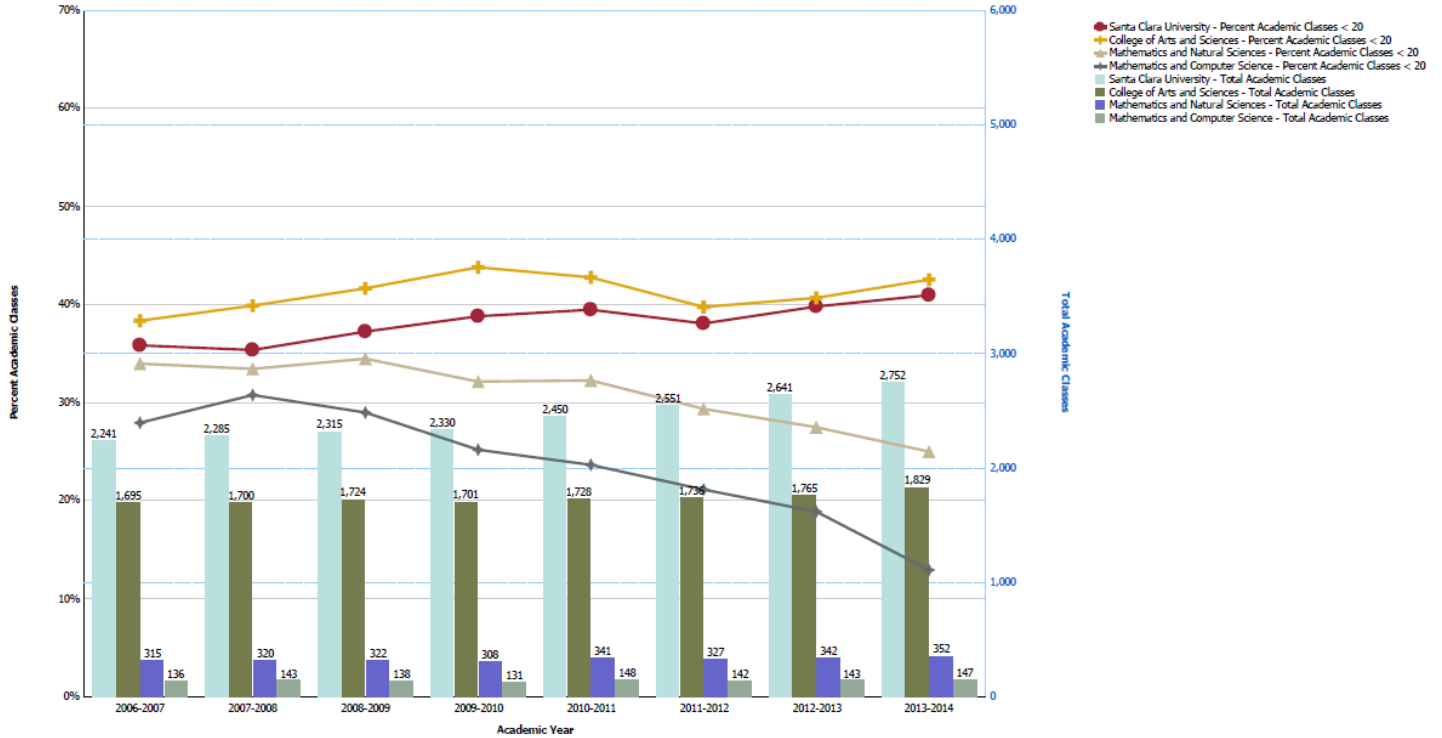
In this example, the unduplicated degree count for first-time freshmen graduating in a specific major is compared to its respective school and the total first-time freshmen degree count. The chart also displays the average degree GPA for first-time freshmen graduating in the major and compares it to the average degree GPA of the school and total first-time freshmen degree count.



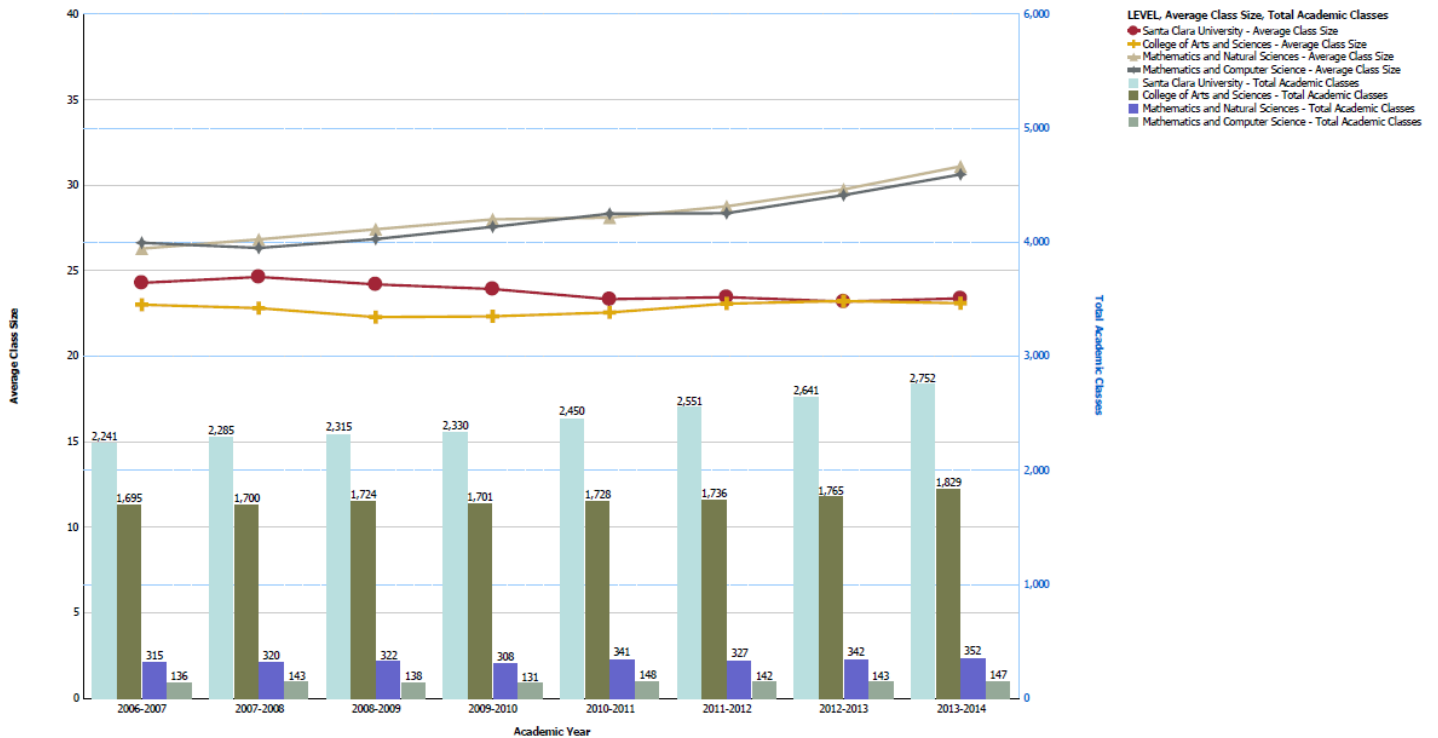
PROGRAM REVIEW – Example Charts Undergraduate Class Size

The charts below provide examples of the many ways to display the data from the reports.

In this example, the percent of academic classes with fewer than 20 students for a specific department is compared to its respective cluster, college, and the total undergraduate number of classes. The chart also displays the total number of academic classes for the department, cluster, college, and total undergraduate.



In this example, the average class size for academic classes for a specific department is compared to its respective cluster, college, and the total undergraduate class size. The chart also displays the number of academic classes for the department, cluster, college, and total undergraduate.



PROGRAM REVIEW – Example Chart Undergraduate Classes Taught

The chart below provides an example of the many ways to display the data from the reports.

In this example, the percent of academic classes taught by full-time faculty for a specific department is compared to its respective cluster, college, and the total undergraduate percentage. The chart also displays the total number of academic classes for the department, cluster, college, and total undergraduate.

