

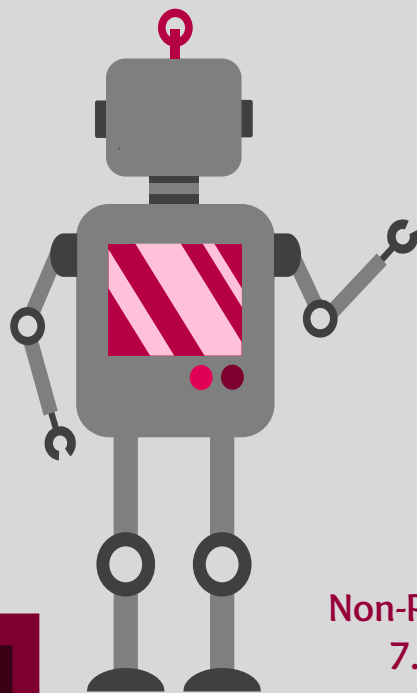
# Santa Clara University Class of 2019

School of Engineering

## Workforce Statistics

90.7%  
Are Employed<sup>5</sup>

\$74,500  
Median Salary



## Sectors of Employment<sup>1</sup>

Manufacturing  
47.4%

Non-Profit  
7.9%

Service  
44.7%

Note: Percentages may not add to 100 due to rounding

## Graduates Rate

SCU

Good to Excellent  
preparation for...

Career<sup>1</sup> 73%

Life after College<sup>2</sup> 82.1%

Graduate Study<sup>3</sup> 100%

## Where Are They Now?

Graduate School  
20.8%

Other  
5.7%

Service Program  
0%

Employed  
73.6%

60%

Granted one or more fellowships, teaching assistantships, and/or research assistantships<sup>3</sup>

100%

Admitted to at least one graduate program<sup>4</sup>

<sup>1</sup> of those working, <sup>2</sup> all graduates, <sup>3</sup> of those attending graduate school, <sup>4</sup> of those who applied for graduate study, <sup>5</sup> of graduates in the job market